

VECTOR DROP | VD30400

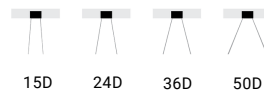
Low Voltage Track Lighting System

Description

The VECTOR DROP magnetic track pendant offers a refined vertical lighting solution within low-voltage track systems. Featuring a slim cylindrical form suspended from the magnetic track, it delivers focused, downward illumination while maintaining a minimal architectural presence. Designed for flexible positioning and effortless installation, VECTOR DROP is ideal for highlighting counters, dining tables, circulation zones, or feature areas. Its clean geometry and controlled light output make it a perfect balance between decorative accent and functional lighting for contemporary retail, hospitality, and residential interiors.

Colour

Black



TECHNICAL DATA

Light source

Light source: LED COB
 Output (W): 6W
 Color temperature: 2700K/3000K/4000K
 CRI: ≥ 90
 Delivered Lumen: 440lm
 Control : On Off / Dali / 0-10V
 Efficacy: 73.3lm/W
 Life Time: 50000h
 MacAdam steps: 3
 UGR: <17

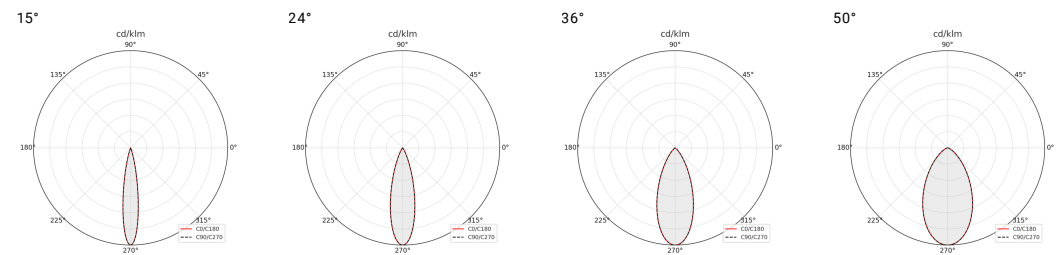
Physical Attributes

TrimType : N/A
 Orientation : Hanging
 Diameter : 30mm
 Height : 400mm
 Cut-Out : N/A

Electrical Features

Input Voltage : 48V
 Driver Type : Integrated

Photometric Distribution Curve



Various technical specifications, colors, and finishes are available upon request.

